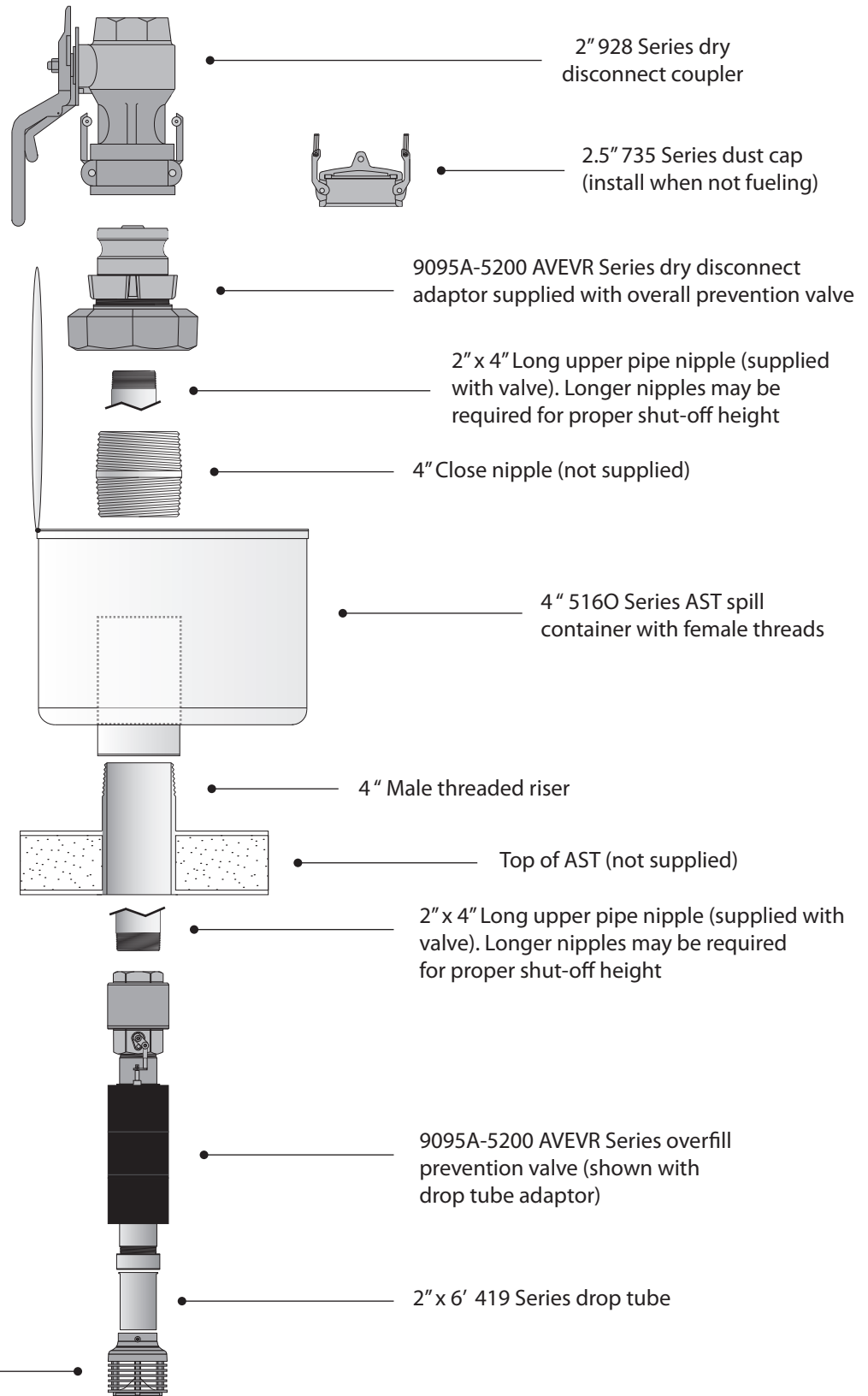


EVR Approved Direct Fill Male Threaded Tank Connection



539 Diffuser (shown, optional) or Drop Tube cut at 45 degree angle. The top of Diffuser opening or top of Drop Tube cut to be no greater than 6" from the bottom of the tank (or per local requirements outside of the state of California).

The Drop Tube Diffuser and Overfill Prevention device may have to be removed (if installed) upon District request to verify the existence of a submerged fill pipe.