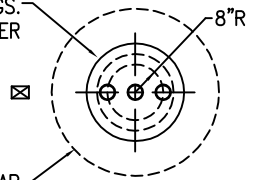


22" FLGD. MANWAY
w/3-4" C.S. NPT FTGS.
& COVER



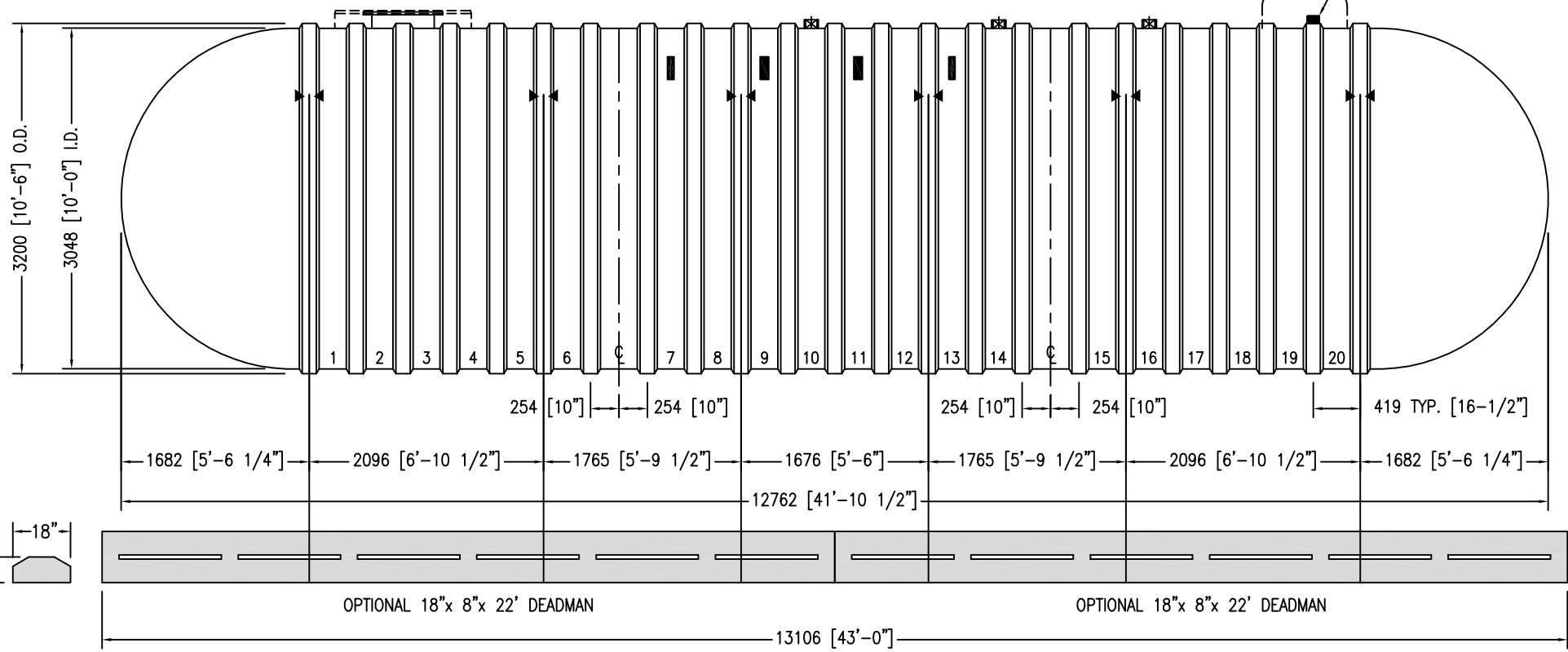
OPTIONAL 48" CONTAINMENT COLLAR

4" FRP NPT FTGS. (3 TYP.)



OPTIONAL RESERVOIR

4" ANNULAR SPACE FTG.



NOTES:

- ▶◀ HOLD DOWN STRAP LOCATION
- TYPE "13" LIFT LUG - SD
- TYPE "13" LIFT LUG - HD

UNLESS NOTED-ALL DIMS ARE IN mm

CUSTOMER:
 APPROVAL SIGNATURE / DATE:
 DWG NUMBER: X85MLDW-CNF
 DRAWN BY: R.OXNER

Model DWT6 10-85000 L
 Double Wall Fiberglass CUL Tank

| | | | |
|----------------------------|------------------------|----------|--|
| CAPACITY: LITERS / GALLONS | WEIGHT: KILOS / POUNDS | DATE: | |
| 85,345 / 22,546 | 7,000 / 15,400 | 10/01/18 | |

CONTAINMENT SOLUTIONS[®]

www.containmentsolutions.com
 1-877-CSI-TANK