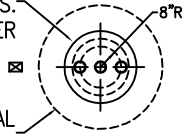


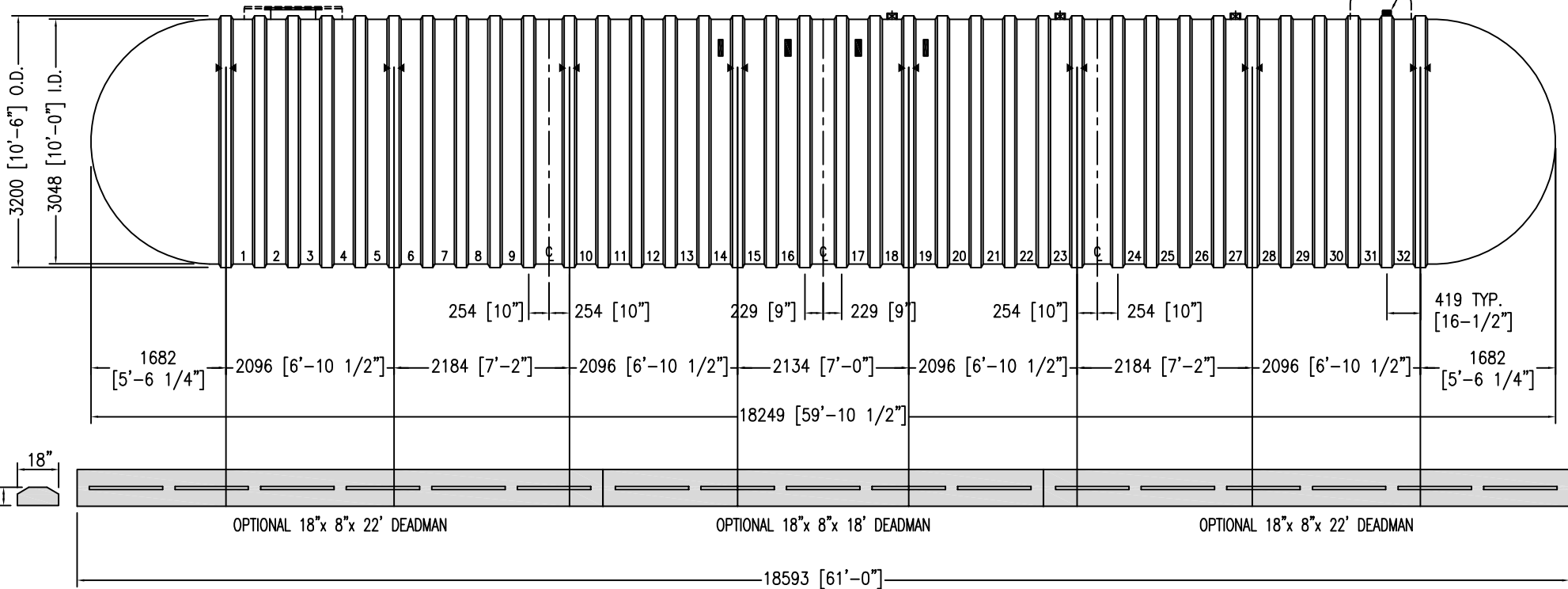
22" FLGD. MANWAY
w/3-4" C.S. NPT FTGS.
& COVER

OPTIONAL
48" CONTAINMENT COLLAR



4" FRP NPT FTGS. (3 TYP.)

OPTIONAL RESERVOIR
4" ANNULAR SPACE FTG.



NOTES:



▶ ◀ HOLD DOWN STRAP LOCATION
 □ TYPE "13" LIFT LUG - SD
 ■ TYPE "13" LIFT LUG - HD
 UNLESS NOTED-ALL DIMS ARE IN mm

CUSTOMER:

APPROVAL SIGNATURE / DATE:

DWG NUMBER:

X125MLDW-CNF

DRAWN BY:

R.OXNER

Model DWT6 10-125000 L
 Double Wall Fiberglass CUL Tank

CAPACITY: LITERS / GALLONS

125,286 / 33,097

WEIGHT: KILOS / POUNDS

10,500 / 23,150

DATE:

10/01/18

CONTAINMENT
 SOLUTIONS[®]

www.containmentsolutions.com

1-877-CSI-TANK